

Microsoft Power BI

April 2019

Solutions for **Success**



Unlock insights
on any data

Power BI
overview

Turning data
into a business
advantage

Solutions for **Success**



POINT ALLIANCE



Everyone should have access to the data they need

Solutions for **Success**



POINT ALLIANCE

About Power BI

- **Create**

- Connect to your data wherever it lives. Then explore your data with stunning interactive visualizations.

- **Collaborate and share**

- Publish reports and dashboards, collaborate with your team, and share insights inside and outside of your organization.

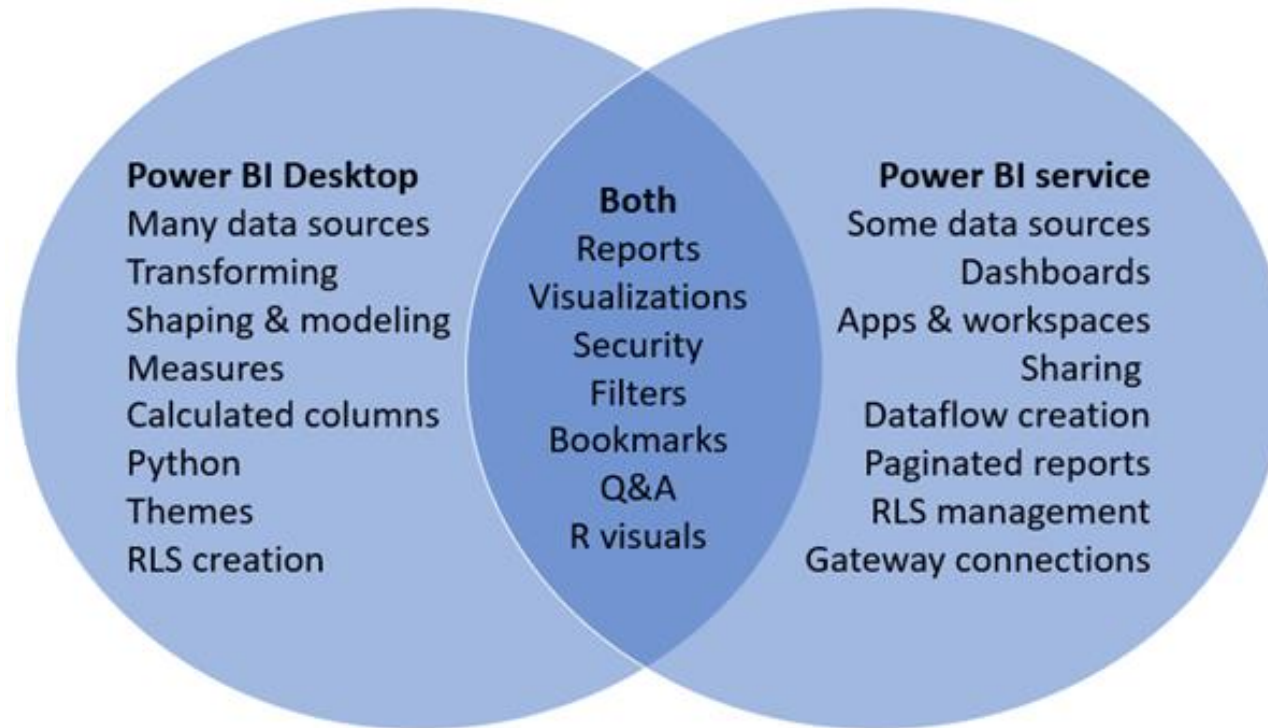
- **Access insights from anywhere**

- Take action with seamless access to insights from your desk or while on the go with Power BI apps built by Microsoft, Microsoft partners and your own organization.

Power BI Solution

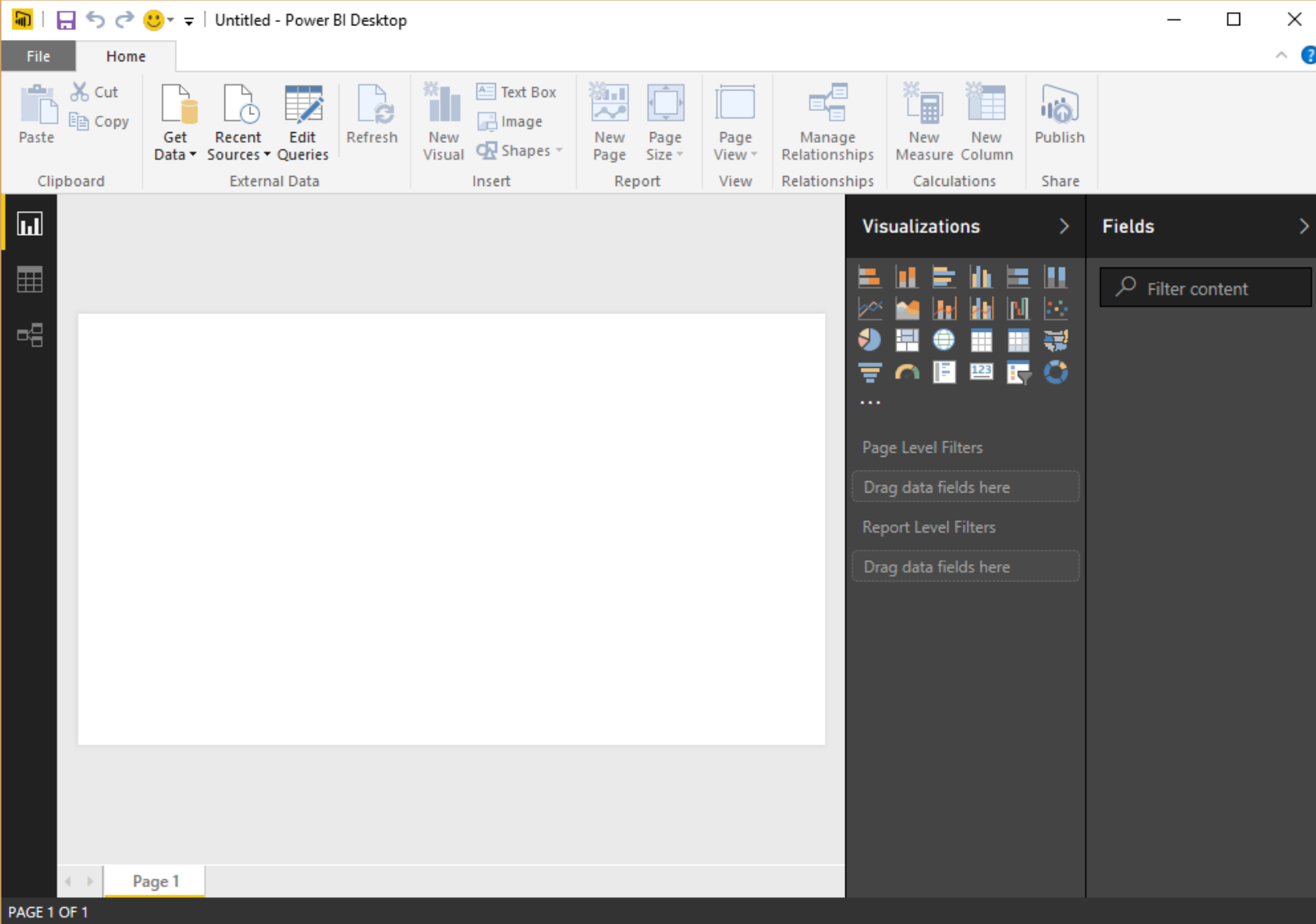
- Power BI Desktop
- Power BI Service
 - Power BI Pro
 - Power BI Premium
- Power BI Mobile
- Power BI Embedded
- Power BI Report Server
- Excel
- Power BI for Office 365

Comparing Power BI Desktop and the Power BI service

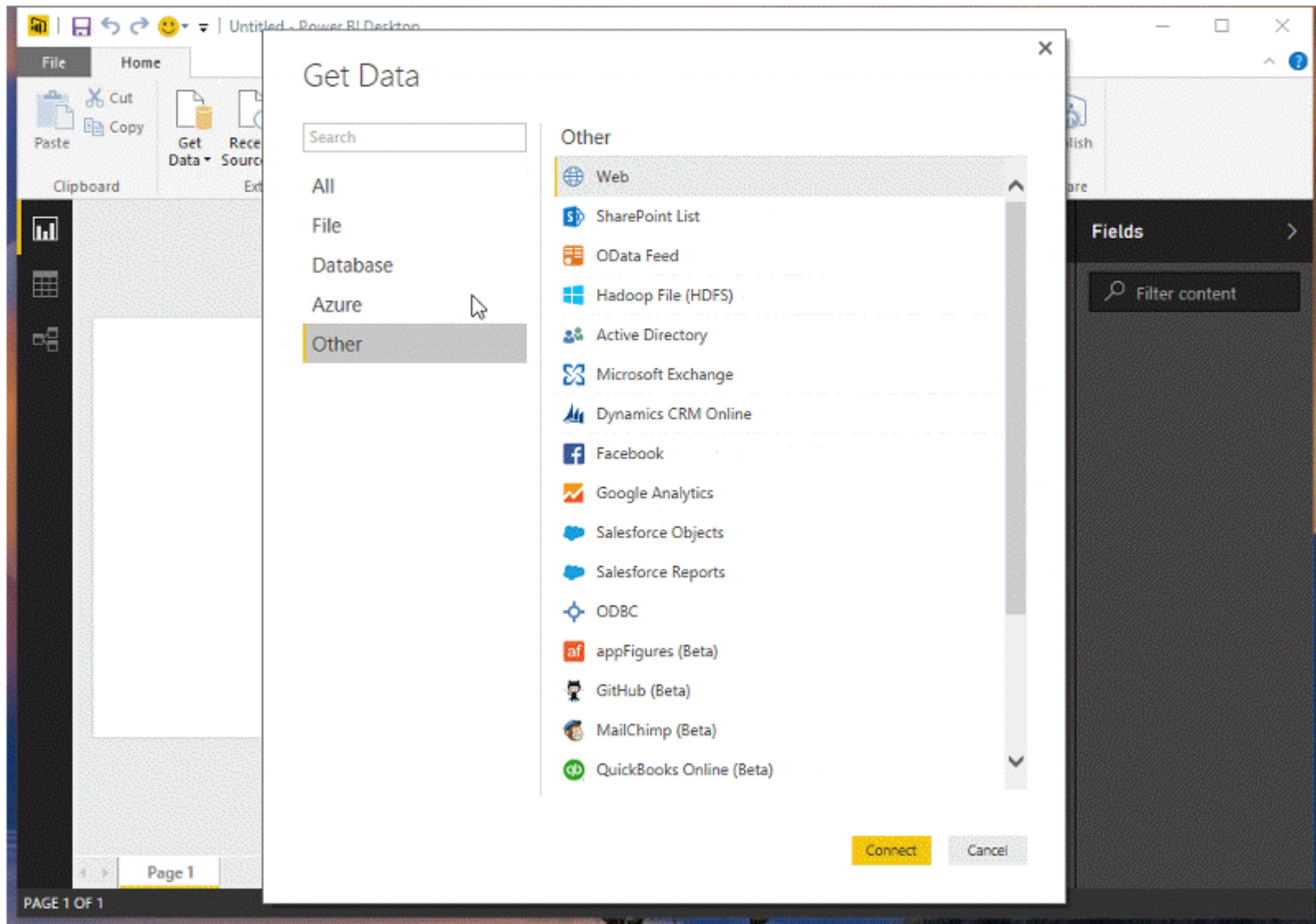


Power BI Desktop

- It's free
- Installed as an application, and runs on your desktop
- It can centralize, simplify, and streamline what can otherwise be a scattered, disconnected, and arduous process of designing and creating business intelligence repositories and reports
- Connect to data, shape that data, and use that model to create reports
- Save your work in Power BI Desktop file format and share like any other file or upload them on the Power BI service



There are three views in Power BI Desktop: **Report** view, **Data** view, and **Relationships** view. Power BI Desktop also includes **Query Editor**, which opens in a separate window. In **Query Editor**, you can build queries and transform data, then load that refined data model into Power BI Desktop, and create reports.



There are *all* sorts of data sources available in the Query window.

Power BI Desktop

Demo

-> Team Scorecard

-> Ask a question

Solutions for **Success**



POINT ALLIANCE

Analyzing data in Excel

Analyze in Excel



- Power Query
- Power Pivot
- Power View
- Power Map

Discover



Analyze



Visualize



Solutions for **Success**



POINT ALLIANCE

Easily discover and access public and corporate data

The screenshot displays the Microsoft Excel interface with the 'S&P 500 Component Stocks' data table loaded. The table includes columns for Ticker symbol, Company, SEC filings, GICS Sector, and GICS Sub Industry. The 'Online Search' pane on the right shows search results for 'S&P 500' from Wikipedia.

Ticker symbol	Company	SEC filings	GICS Sector	GICS Sub Industry
MMM	3M Co.	reports	Industrials	Industrial Conglomerate
ABT	Abbott Laboratories	reports	Health Care	Health Care Equipment
ABBV	AbbVie	reports	Health Care	Pharmaceuticals
ANF	Abercrombie & Fitch Company A	reports	Consumer Discretionary	Apparel, Accessories & L
ACE	ACE Limited	reports	Financials	Property & Casualty Insu
ACN	Accenture plc	reports	Information Technology	IT Consulting & Services
ACT	Actavis Inc	reports	Health Care	Pharmaceuticals
ADBE	Adobe Systems Inc	reports	Information Technology	Application Software
ADT	ADT Corp	reports	Industrials	Diversified Commercial
AMD	Advanced Micro Devices	reports	Information Technology	Semiconductors
KSS	Kohl's Corp.	reports	Consumer Discretionary	General Merchandise St
KRFT	Kraft Foods Group	reports	Consumer Staples	Packaged Foods & Meal
LOW	Lowe's Cos.	reports	Consumer Discretionary	Home Improvement Ret
LSI	LSI Corporation	reports	Information Technology	Semiconductors

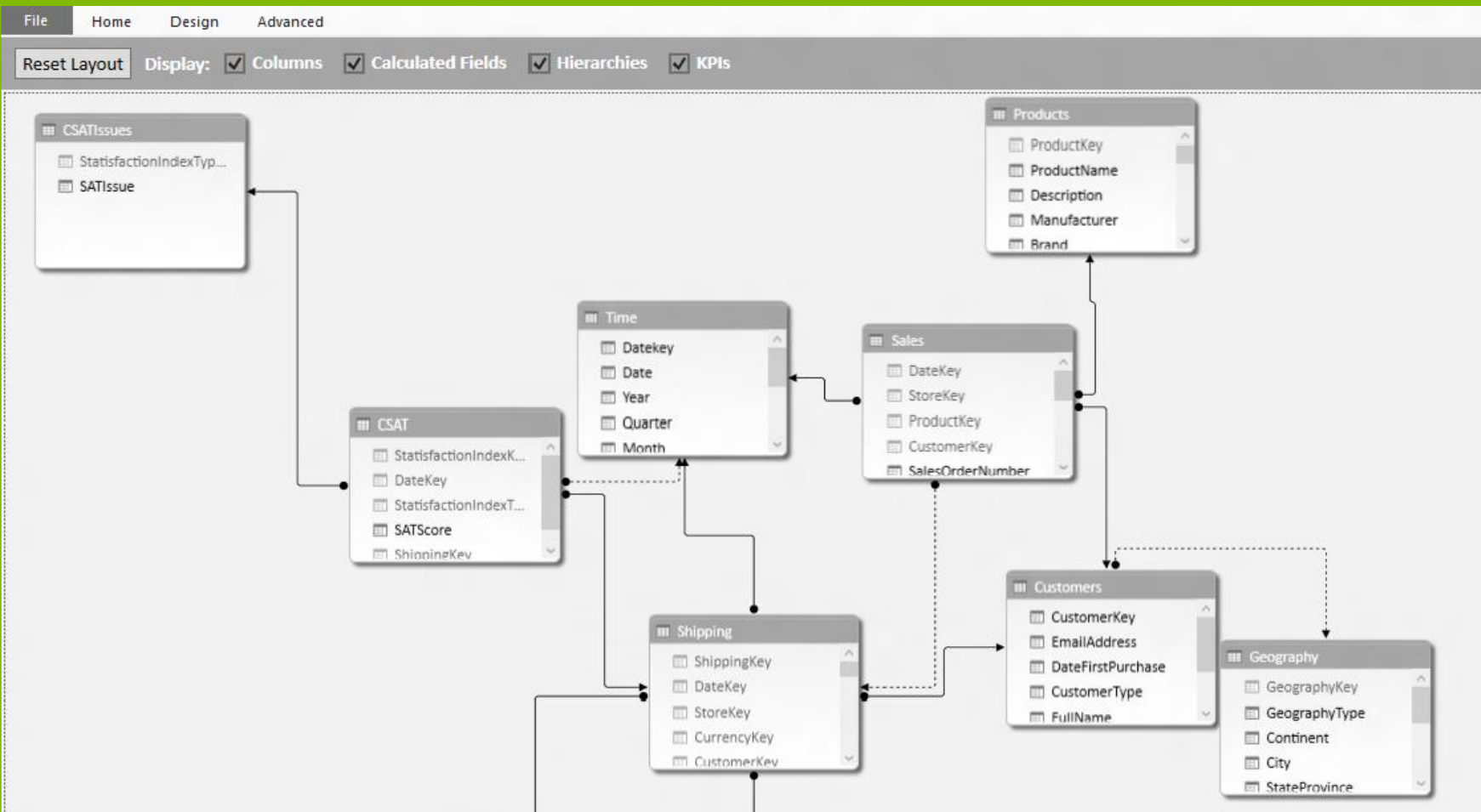
Online Search

S&P 500

408 results

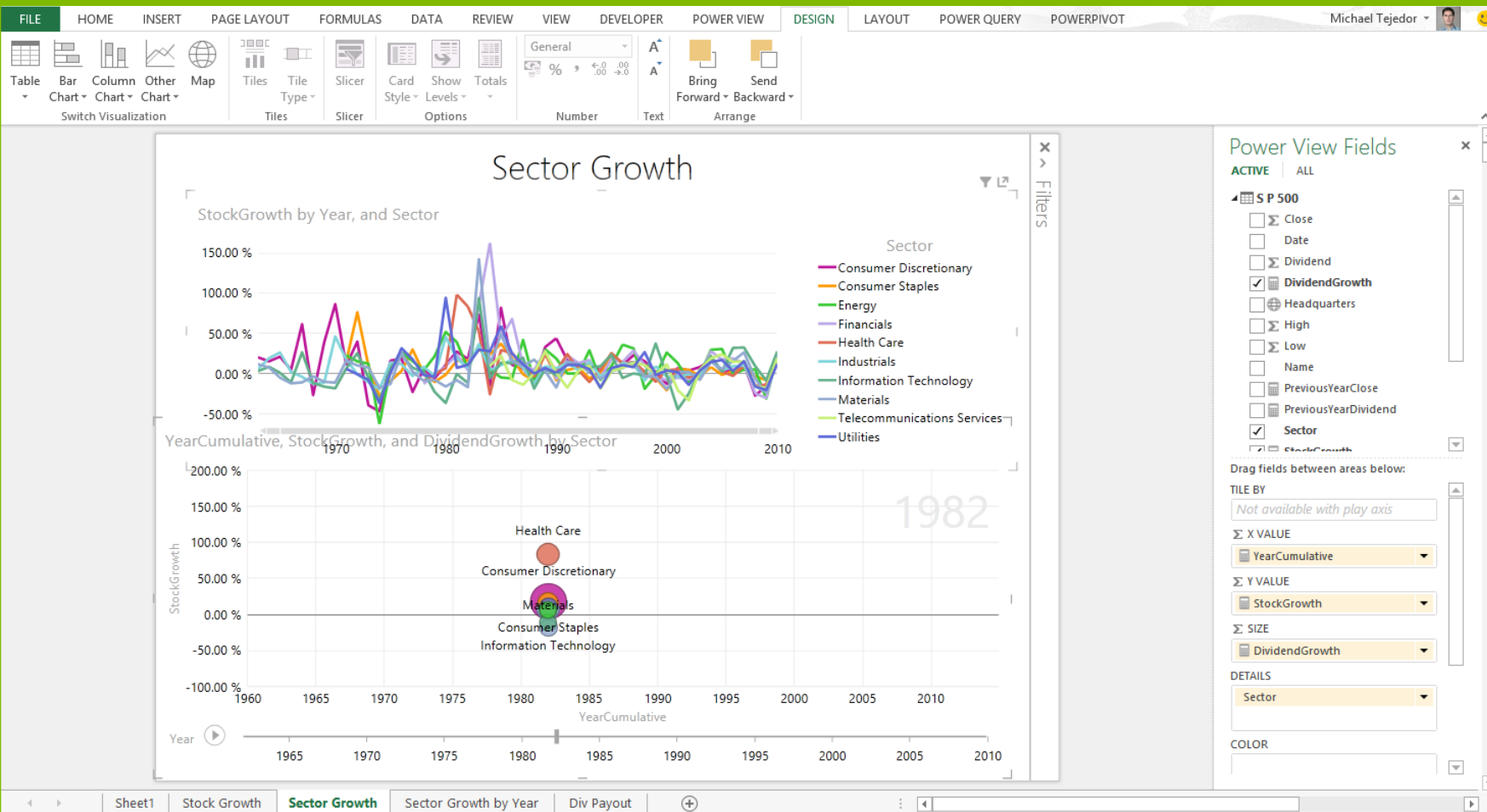
- Recent changes to the list of ...
From Wikipedia on Wednesday, Augus...
List of S&P 500 companies - Wikipedia, the free encyclopedia
- S&P 500 Component Stocks ...**
From Wikipedia on Wednesday, Augus...
List of S&P 500 companies - Wikipedia, the free encyclopedia
- Investing - S&P 500
From Wikipedia on Wednesday, Augus...
S&P 500 - Wikipedia, the free encyclopedia
- Index maintenance - S&P 500
From Wikipedia on Wednesday, Augus...
S&P 500 - Wikipedia, the free encyclopedia
- Total annual returns - Market ...
From Wikipedia on Wednesday, Augus...
S&P 500 - Wikipedia, the free encyclopedia
- Largest percentage changes ...

Model & analyze 100's of millions of rows of data



Solutions for **Success**

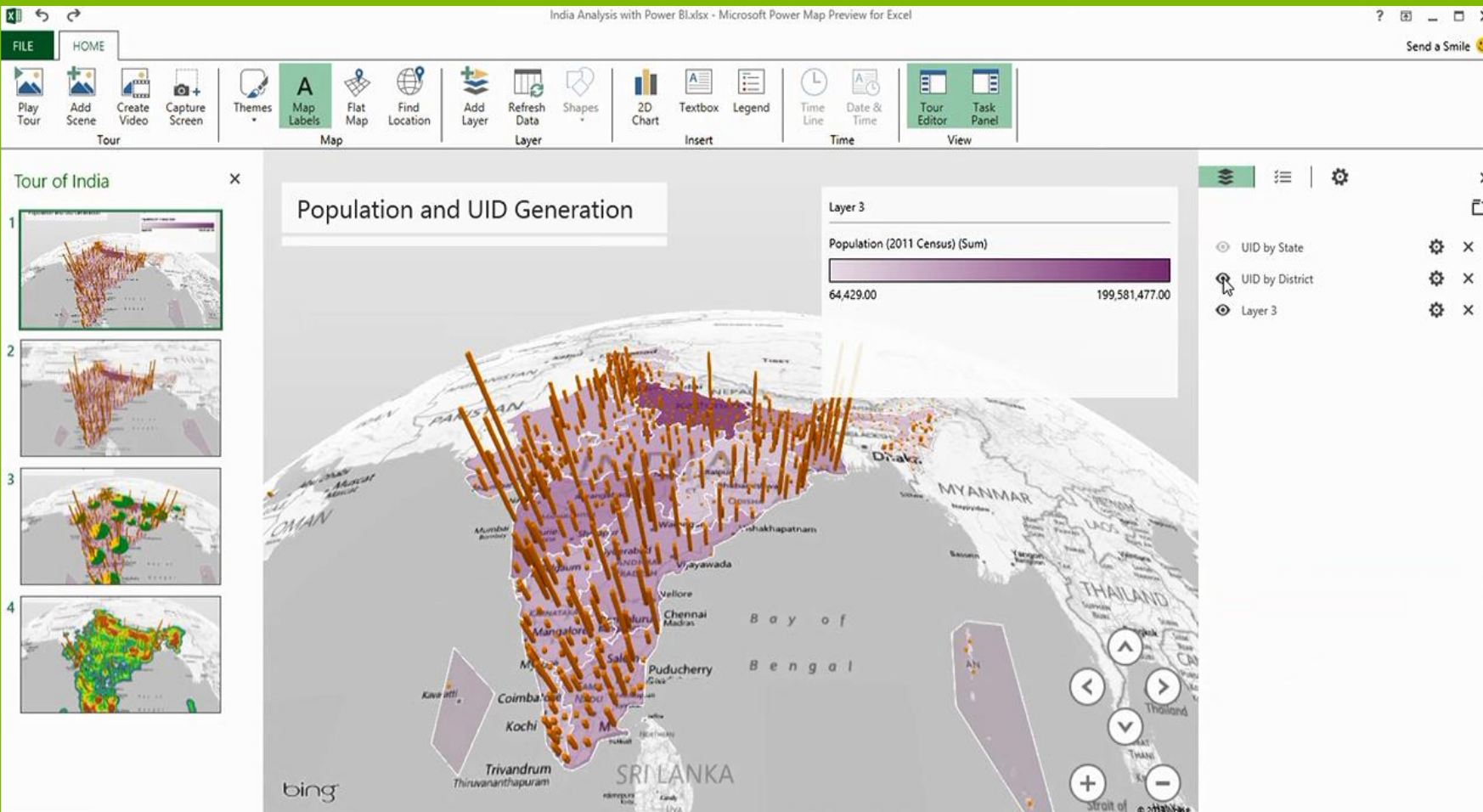
Explore your data with interactive visualization



Solutions for **Success**



Uncover new insights with 3D geospatial analysis



Solutions for **Success**



Power BI Mobile

- View your personalized dashboards and reports anywhere
- Interact with your data easily in a touch-optimized experience with the Power BI native Windows, iOS, and Android apps
- Connect to Power BI in the cloud
- Connect to your SSRS server



HOME [2]



Demo DC
2 MOBILE REF



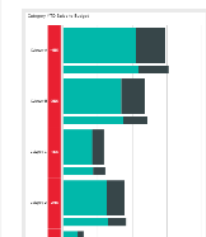
Shared D

KPI [1]

YTD Margin to B
\$725,224
(-2...)

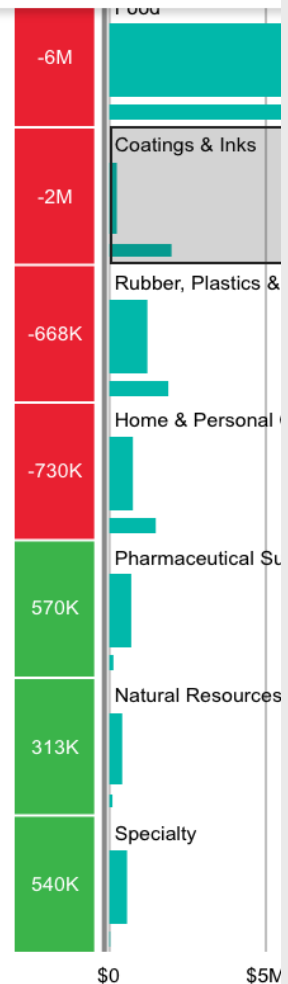
MOBILE REPORTS |

Category...



Coatings & Inks

YTD_Sales
\$236K



Total Sales to Budget

ROGERS

5:05 PM



Category YTD Sales to Budget List



Category YTD Sales to Budget List

Category	YTD Budget Sales	YTD Budget Margin	YTD Sales	YTD Margin	YTD Sa
Pet Food	\$15,530,897	\$986,977	\$6,486,338	\$725,224	
Food	\$14,972,804	\$1,909,300	\$9,352,386	\$1,263,261	
Coatings & Inks	\$1,983,469	\$241,551	\$236,288	\$30,506	
Rubber, Plastics & Adhesives	\$1,881,473	\$358,199	\$1,213,204	\$244,393	
Home & Personal Care	\$1,480,706	\$194,908	\$750,270	\$150,068	
Pharmaceutical Supplements	\$127,523	\$15,649	\$697,192	\$160,980	
Natural Resources	\$95,733	\$11,036	\$408,735	\$92,484	
Specialty	\$22,352	\$12,237	\$562,790	\$136,286	

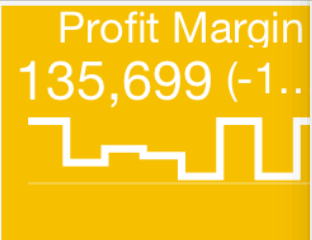
\$2,000,200

▼ 24.84%



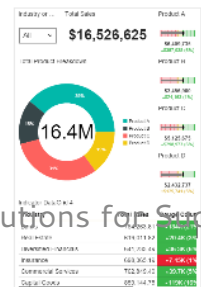
POINT ALLIANCE

< Sales REFRI



MOBILE REPORTS [5]

Categor...



Sales R...

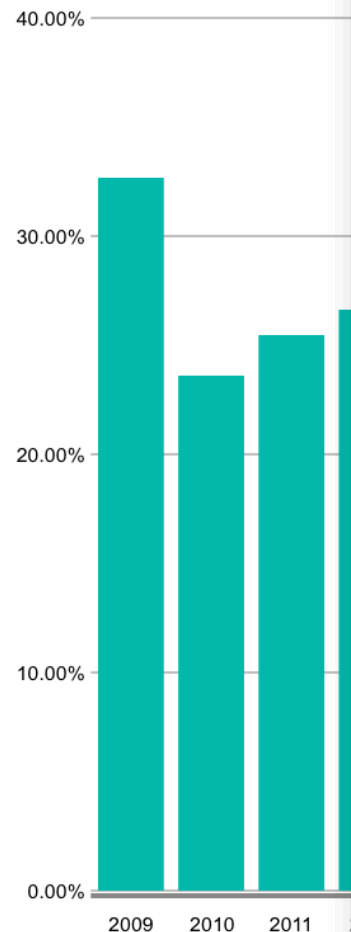


< Average Sel

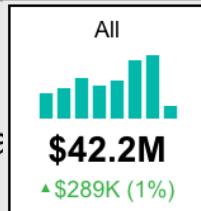
2015

Sell_Thru_Percentage

23.34%

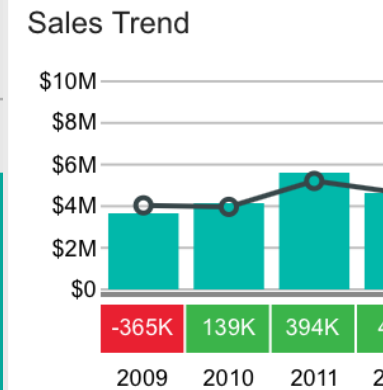


< Sales Trend



Total Sales

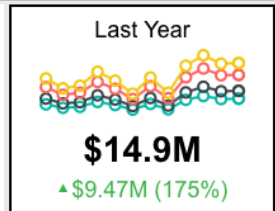
\$42,154,900



Sales details per month

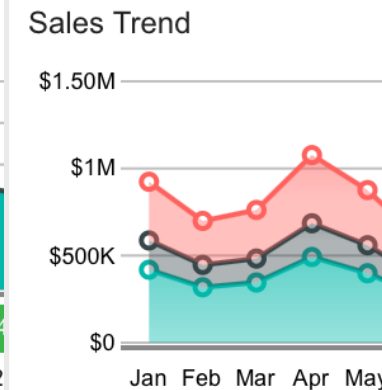
Date	Metri
1 2009/01/01	305
2 2009/02/01	239
3 2009/03/01	250
4 2009/04/01	267

< Sales Trend



Total Sales All Products Comb

\$5,312,500



Product A

\$2,131,300

vs. Target

2.0%

< Store Scorecard Report Sample

Scorecard Grid 1

All

Revenue ...	Expense...	Profit vs. ...	Profit Ma...
\$367,232,...	\$205,271,...	\$161,961...	511%
▲\$2,059,428	▲\$12,487,968	▼\$10,428,540	▼2,485%

Incidents Per Product Line vs. Incident Threshold

Division	Product Line	Product 1	Produ
Division A1	Product Line X	▼2 (33%)	▼2 (
Division A1	Product Line Y	▼5 (83%)	▼5 (
Division A1	Product Line Z	▲1 (17%)	▲1 (
Division A1	Product Line W	▼4 (67%)	▼4 (
Division A2	Product Line X	▼2 (33%)	▼2 (
Division A2	Product Line Y	▲1 (17%)	▲1 (
Division A2	Product Line Z	▲3 (50%)	▲3 (
Division A2	Product Line W	▼5 (83%)	▼5 (
Division A3	Product Line X	▲0 (0%)	▲0 (
Division A3	Product Line Y	▲6 (100%)	▲6 (
Division A3	Product Line Z	▼3 (50%)	▼3 (

< Category Report Sample

Industry ...

All ▾

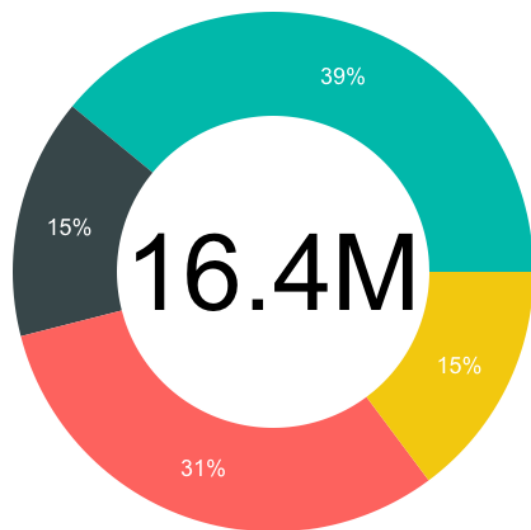
Total Sales

\$16,526,625

Product A

\$6,409,735
▲\$357,038

Total Product Breakdown



Product B

\$2,456,900
▲\$24,163

Product C

\$5,125,675
▲\$298,973

Product D

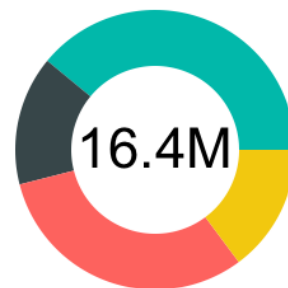
\$2,432,737
▼\$125,741

Indicator DataGrid 4

Industry	Total Sales	Ga
Banks	764,263.81	▲
Real Estate	619,011.82	▲
Diversified Financials	641,233.49	▲
Insurance	698,365.19	▼

< Category Report Sample

Total Product Breakdown



Product A

\$6,409,735
▲\$357,038 (6%)

Product B

\$2,456,900
▲\$24,163 (1%)

Product C

\$5,125,675
▲\$298,973 (6%)

Product D

\$2,432,737
▼\$125,741 (5%)

Industry or Sector

All ▾

Total Sales

\$16,526,625

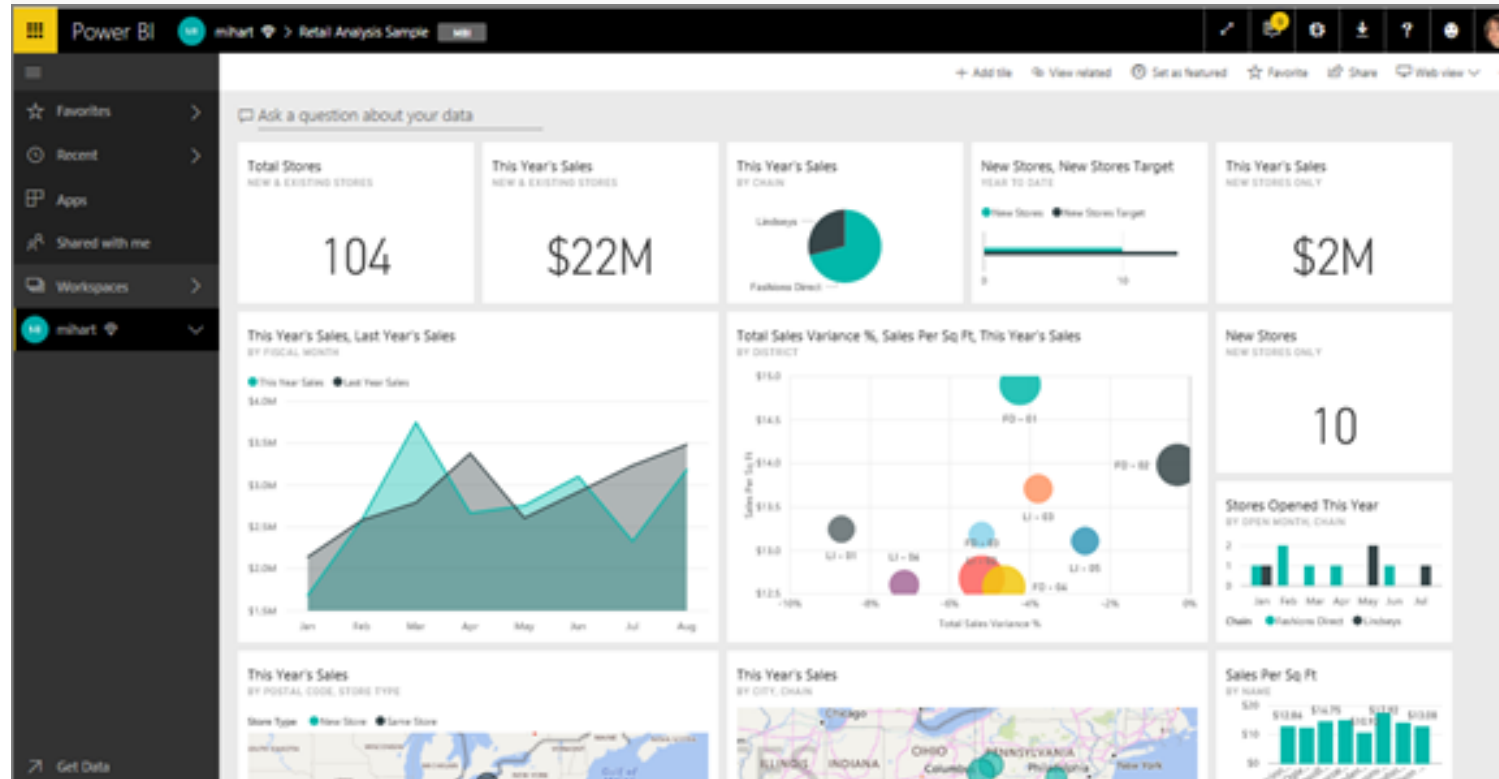
vs. Tar...

▲4.1%

Indicator DataGrid 4

Industry	Total Sales	Gauge Column
Banks	764,263.81	▲ 134K (21%)
Real Estate	619,011.82	▲ 20.4K (3%)
Diversified Financials	641,233.49	▲ 36.3K (6%)
Insurance	698,365.19	▼ 7.45K (1%)
Commercial Services	762,849.40	▲ 39.7K (5%)
Capital Goods	859,144.75	▲ 119K (16%)

Power BI Tiles



Solutions for **Success**